



Built-in Advantages

Automatic Locking System



Hydraulic Supporting Leg



200° Over-Centre Folding



Support Bearings on all Sections

Does not apply to wing sections of 12.30 / 15.30 m.



560/45R 22.5-152D Radial Tyres

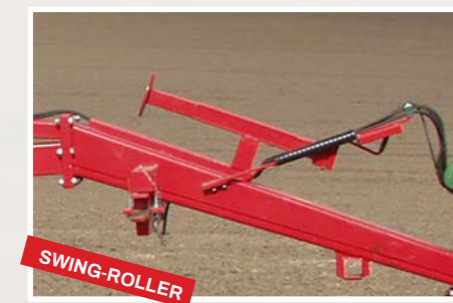
Applies only to 16.30 - 20.30 m.



Manual Locking System



Supporting Leg with Gear



Extra Equipment

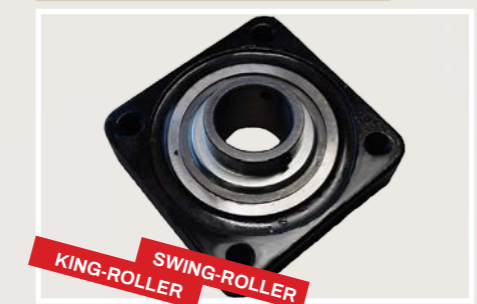
Air Brakes



Hydraulic Brakes



Rubber Sealed Ball Bearings



Multi-Seeder



Wheel Track Eradicator Set, Hydr.

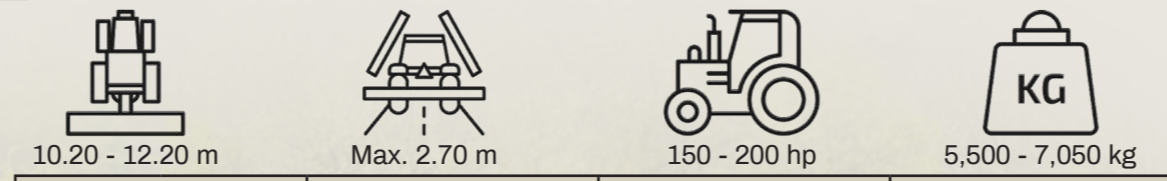


Wheel Track Eradicator Frame, Lift



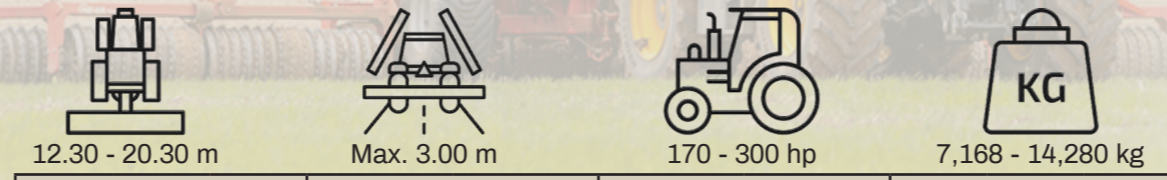
Technical Specifications

Swing-Roller



Work Width, m	RING SIZE	Cambridge				Star Ring				Crosskill				2D-Corrugated			
		510 mm	510 mm	450/500 mm	485/530 mm	500 mm	500 mm	450/500 mm	485/530 mm	500 mm	500 mm	450/500 mm	485/530 mm	500 mm	500 mm		
10.20 TRANSPORT MAX. 2.70	SPOKES	3	8	-	-	8	8	-	-	8	8	-	-	8	8		
	WEIGHT, KG	6,010	6,330	6,120	5,960	5,500	6,680	7,050	6,750	6,650	6,130	6,680	7,050	6,750	6,650		
	RINGS, PCS.	199	199	194	105	125	235	235	230	125	150	235	235	230	125		
12.20 TRANSPORT MAX. 2.70	AXLE, MM	60	60	60	60	60	60	60	60	60	60	60	60	60	60		
	WEIGHT, KG	6,680	7,050	6,750	6,650	6,130	13,600	14,280	12,618	13,494	12,944	13,600	14,280	12,618	13,494		
	RINGS, PCS.	235	235	230	125	150	386	386	376	203	248	386	386	376	203		
12.30 TRANSPORT MAX. 3.00	AXLE, MM	60	60	60	60	60	60	60	60	60	60	60	60	60	60		
	WEIGHT, KG	9,260	10,931	11,880	8,800	10,370	8,380	10,068	7,925	8,680	9,323	9,260	10,931	11,880	8,800		
	RINGS, PCS.	236	236	236	224	224	125	125	150	150	150	292	292	282	282		
15.30 TRANSPORT MAX. 3.00	AXLE, MM	60	60	60	60	60	60	60	60	60	60	60	60	60	60		
	WEIGHT, KG	10,818	12,675	13,800	11,015	12,866	10,752	12,765	10,088	10,834	11,649	10,818	12,675	13,800	11,015		
	RINGS, PCS.	346	346	346	328	328	183	183	223	223	223	346	346	346	328		
20.30 TRANSPORT MAX. 3.00	AXLE, MM	60	60	60	60	60	60	60	60	60	60	60	60	60	60		
	WEIGHT, KG	13,600	14,280	-	12,618	-	13,494	-	12,770	12,944	-	13,600	14,280	-	12,618		
	RINGS, PCS.	386	386	-	376	-	203	-	248	248	-	386	386	-	376		
16.30 TRANSPORT MAX. 3.00	AXLE, MM	60	60	60	60	60	60	60	60	60	60	60	60	60	60		
	WEIGHT, KG	10,241	11,365	12,360	9,817	11,460	9,340	11,130	9,510	9,650	10,360	10,241	11,365	12,360	9,817		
	RINGS, PCS.	306	306	306	296	296	163	163	199	199	199	306	306	306	296		
18.30 TRANSPORT MAX. 3.00	AXLE, MM	60	60	60	60	60	60	60	60	60	60	60	60	60	60		
	WEIGHT, KG	10,818	12,675	13,800	11,015	12,866	10,752	12,765	10,088	10,834	11,649	10,818	12,675	13,800	11,015		
	RINGS, PCS.	346	346	346	328	328	183	183	223	223	223	346	346	346	328		
20.30 TRANSPORT MAX. 3.00	AXLE, MM	60	60	60	60	60	60	60	60	60	60	60	60	60	60		
	WEIGHT, KG	13,600	14,280	-	12,618	-	13,494	-	12,770	12,944	-	13,600	14,280	-	12,618		
	RINGS, PCS.	386	386	-	376	-	203	-	248	248	-	386	386	-	376		

King-Roller



Work Width, m	RING SIZE	Cambridge			Star Ring		Crosskill		2D-Corrugated		
		510 mm	560 mm	620 mm	450/500 mm	550/600 mm	485/530 mm	550/600 mm	500 mm	550 mm	600 mm
12.30 TRANSPORT MAX. 3.00	SPOKES	8	9	10	-	-	-	-	8	9	10
	WEIGHT, KG	7,708	8,593	9,360	7,414	8,683	7,668	9,043	7,168	7,310	8,218
	RINGS, PCS.	236	236	236	224	224	125	125	150	150	150
15.30 TRANSPORT MAX. 3.00	AXLE, MM	60	60	60	60	60	60	60	60	60	60
	WEIGHT, KG	9,260	10,931	11,880	8,800	10,370	8,380	10,068	7,925	8,680	9,323
	RINGS, PCS.	236	236	236	224	224	125	125	150	150	150
16.30 TRANSPORT MAX. 3.00	AXLE, MM	60	60	60	60	60	60	60	60	60	60
	WEIGHT, KG	10,241	11,365	12,360	9,817	11,460	9,340	11,130	9,510	9,650	10,360
	RINGS, PCS.	306	306	306	296	296	163	163	199	199	199
18.30 TRANSPORT MAX. 3.00	AXLE, MM	60	60	60	60	60	60	60	60	60	60
	WEIGHT, KG	10,818	12,675	13,800	11,015	12,866	10,752	12,765	10,088	10,834	11,649
	RINGS, PCS.	346	346	346	328	328	183	183	223	223	223
20.30 TRANSPORT MAX. 3.00	AXLE, MM	60	60	60	60	60	60	60	60	60	60
	WEIGHT, KG	13,600	14,280	-	12,618	-	13,494	-	12,770	12,944	-
	RINGS, PCS.	386	386	-	376	-	203	-	248	248	-

WHEELS: 560 / 45 X 22.5 - 16 PLY



Tel.: +45 97 72 42 88
E-mail: info@he-va.com

Web: www.he-va.com

N.A. Christensensvej 34
DK-7900 Nykøbing Mors

Your HE-VA dealer



HE-VA reserves the right to make design and construction changes without notice

Swing- & King-Roller

Maximum Roller Capacity!



Swing-Roller - Large but Compact

Although designed to cope with the higher working loads of larger farms, the Swing-Roller is still easy to handle and simple to fold whilst being capable of covering many hectares in a day.

The rings are mounted on 60 mm axles with double sealed 60 mm large flange ball bearings, mounted with 4 bolts.

The clever design of all HE-VA rolls also ensures that tractor drawbar height variation (400-600 mm) does not have any influence on the soil pressure of the individual roller sections.

Center Suspended Roller Sections

HE-VAs 5 section Swing-Roller has with the centre-suspended roller sections free floatation on each section ensuring supreme contour following - even the centre section floats independently.

Unique SAT-System



Spring Active Transfer

Via the SAT-System on HE-VA Swing-Rollers a uniform weight on all sections is ensured.

Hereby an even consolidation is obtained across the full width of the rolls.

5 section hinge



The folding mechanism has a deep wing link pivot with Teflon coated steel bushing top and bottom to provide the necessary strength.

Folding Sequence - 5-Section Swing-Roller



King-Roller - Larger working widths for larger needs

Maximum field adaptation achieved by flexible sectional suspension and effective weight transfer. With working widths of 12.30 m, 15.30 m, 16.30 m, 18.30 m or 20.30 m, the HE-VA King-Roller meets the increasing need for wider and heavier rollers.



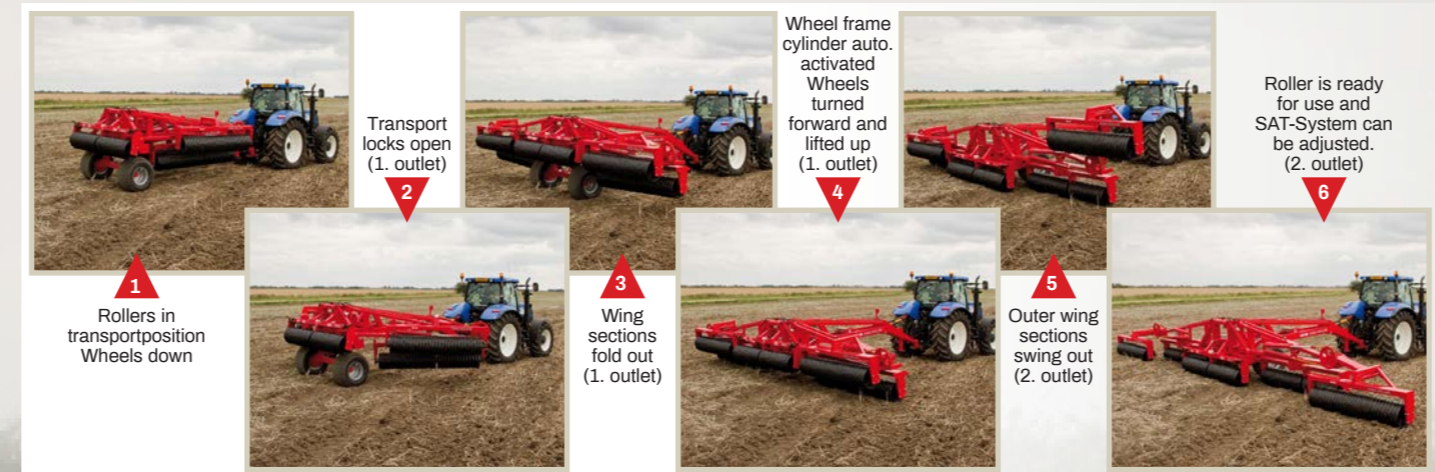
Impressive efficiency

A 20.30 m King-Roller

moving at 8km/hr. with a driver keeping a 90% field efficiency, will cover:

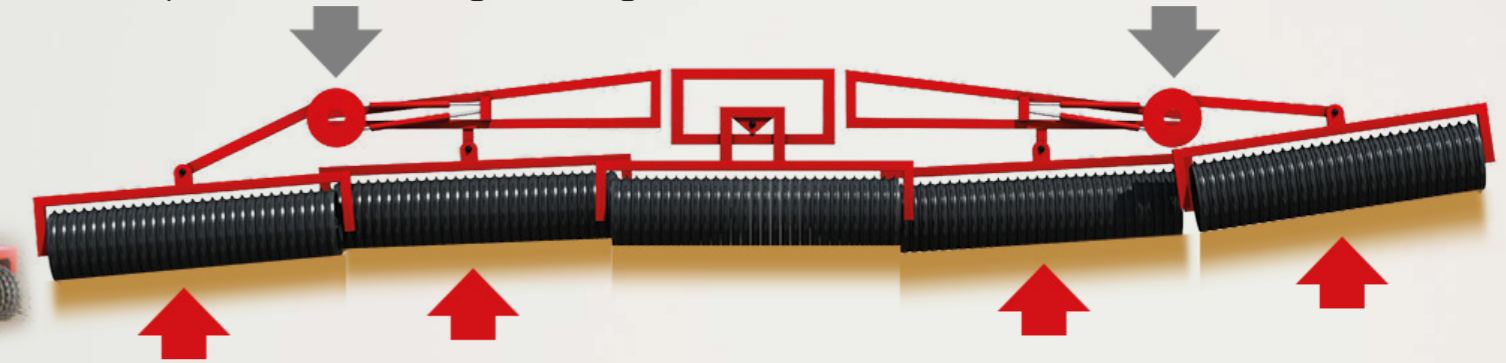
14.6 ha per hour

Folding Sequence - 5-Section King-Roller



Free floating centre-suspended roller sections

All five roller sections on HE-VA King-Roller are centre suspended and with independent flotation resulting in a perfect contour following of the King-Roller.



HE-VA King-Roller is available with 10 different ring types, including the big 24"/620 mm Cambridge rings (20.30 m King-Roller: only 6 ring types). The rings are mounted on 60 mm special steel axles suspended in double sealed 60 mm large flange ball bearings. King-Rollers are mounted with support bearings on all sections (however not on the outer sections of the 12.30 and 15.30 m models). The design of HE-VA King-Roller can withstand higher working loads and HE-VA King-Rollers are also heavier than most of the other similar rolls, ensuring a perfect consolidation.



Smart 200° overcentre-folding via HE-VAs unique and simple chain wheels and cylinders.

Unique SAT-System

King-Roller's hydraulic folding system is linked to two accumulators and a pressure gauge. The pressure gauge allows the operator to set the weight transfer level to ensure even consolidation across the full width.



The King-Roller's main frame is supported by the two intermediate sections (O) see photo. By this SAT-System the necessary part of the roll's weight is transferred to the centre and the outside wing sections.

