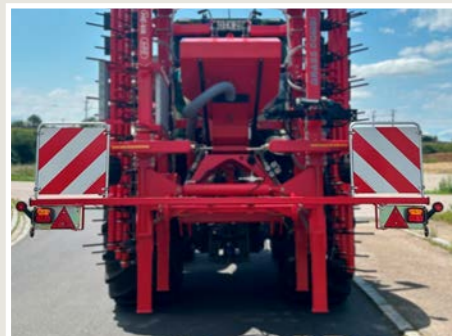


# Extra Equipment

### LED Lights and Warning Boards

Removable bar with LED lighting and warning boards.



### Diverter Valve

Mechanical double diverter valve between position of tine and hydraulic folding.



### Drawbar

Drawbar / Clevis for mounting on the harrow's lift arms, cat. II  
NOTE: Please be aware of national regulations.



### Levelling Board

For leveling mole holes etc.



### Spring-Board

Eliminates small irregularities in the field.



### Multi-Seeder

For sowing grass, cover crops, etc.



# Technical Specifications



6.00 - 7.00 m



Max 2.48 m



1,575 - 1,890 kg



120 - 200 hp

Work Width, m	Description	Number of Tines	Tine Track Distance, cm	Transport Width, m	Transport Height, m	Weight, kg
6.00	2 rows with 12 mm tines	66	9.00	2.48	3.20	1,575 - 1,600
6.00	3 rows with 12 mm tines	80	7.50	2.48	3.20	1,725 - 1,750
7.00	2 rows with 12 mm tines	78	9.00	2.48	3.65	1,715 - 1,740
7.00	3 rows with 12 mm tines	93	7.50	2.48	3.65	1,865 - 1,890

# Grass-Combi

Versatile solution for the maintenance of grasslands



Tel.: +45 97 72 42 88  
E-mail: info@he-va.com

Web: www.he-va.com

N.A. Christensensevej 34  
DK-7900 Nykøbing Mors

Your HE-VA dealer



HE-VA reserves the right to make design and construction changes without notice



# Grass-Combi

With the HE-VA Grass-Combi, the customer has a versatile harrow that can withstand even the most stubborn weeds with its robust 12 mm tines. The tines can be distributed over either two or three rows.



The standard mounted rear snap coupling also allows the Grass-Combi to be used in combination with a trailed roller. In this case, the HE-VA Tip-Roller is the ideal solution.

But the Grass-Combi is also a great choice even without an attached roller. It can i.a. also be used as a light straw harrow.



Short transport length  
- even with a roller



Two  
Rows



Three  
Rows

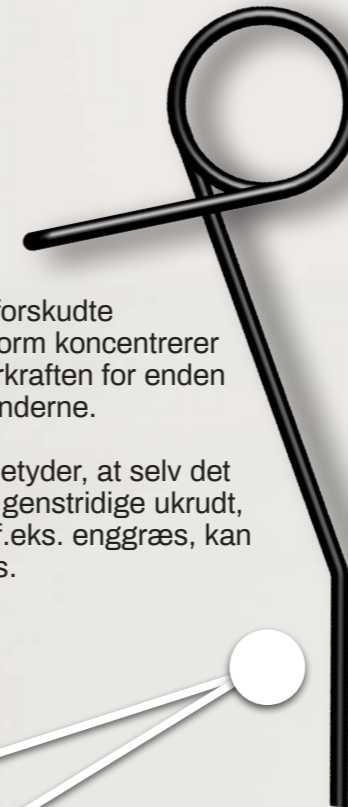
The HE-VA Grass-Combi is available with either two or three rows of tines. The two-row model is recommended for smaller tractors due to the lower lifting requirement. The 3-row variant, on the other hand, offers increased work intensity due to the number of tines.

## Hydraulic Tine Adjustment

Takket være den standard hydrauliske tandjustering kan harvens aggressivitet hurtigt og nemt tilpasses de respektive forhold.



## Aggressive Tine Design



Den forskudte tandform koncentrerer fjederkraften for enden af tænderne.

Det betyder, at selv det mest genstridige ukrudt, som f.eks. enggræs, kan klares.

# Extra Equipment

## Levelling Board and Spring-Board



The customer can use either a 3-part levelling board or Spring-Board as a levelling tool.

The levelling board is suitable for removing molehills etc. on flat terrain.

If the terrain is more rough, you should use a Spring-Board. This is a levelling tool with individual spring tines, which ensures a particularly good adaptation to the terrain.

Both types can be infinitely adjusted in height using spindles.



## Multi-Seeder



Grass-Combi can be equipped with HEVA Multi-Seeder for re-sowing.

In addition to grass seed, this pneumatic seeder can also be used to sow cover crops. The Multi-Seeder is available for Grass-Combi in the sizes 200 and 410 litres.

An electric fan is available for smaller cover crop quantities, and a hydraulically driven fan is available for larger quantities or heavy seeds.

