

DISC-ROLLER CONTOUR (THREE-POINT MOUNTED)



- HE-VA SAT-System on models with 2 and 3 sections.
- Sabre disc" 510 x 4 mm large scalloped disc with specially designed coulter profile – thus ensuring an improved cutting of surface stubble preparation.
- Maintenance-free disc-hubs.
- Working depth of up to 125 mm in minimal tillage cultivations.
- "DSD - Technology": Depth Synchronized Disc-Aggressiveness.
- Three-point linkage with category 3 pins and category 2 distance.

MACHINES

Model, m	Work / Transport Width, m	Roller Type	No. of Rings	No. of Discs	Power Req., HP	Weight, kg	Item Number	
1-SECTION RIGID MODELS WITHOUT HYDRAULIC FOLDING								
2.50	2.25 / 2.50	Square Tube Roller / 550 mm	^{1*}	-	18	80 +	1,300	63090-47
2.50	2.25 / 2.50	Wave roller / 600 mm	^{1*}	16	18	80 +	1,600	63090-83
2.50	2.25 / 2.50	U-Profile Roller / 600 mm	^{1*}	16	18	90 +	-	63090-84
2.50	2.25 / 2.50	V-Profile Roller / 600 mm	^{1*}	16	18	90 +	1,820	63090-86
2.50	2.25 / 2.50	V-Profile Roller / 700 mm	^{1*}	16	18	90 +	-	63090-85
2.50	2.25 / 2.50	Twin U-Profile 600-600 mm	^{1*}	16	18	90 +	-	63090-88
2.50	2.25 / 2.50	Twin V-Profile 600-600 mm	^{1*}	16	18	90 +	-	63090-87
3.00	2.75 / 3.00	Square Tube Roller / 550 mm	^{1*}	-	22	90 +	1,500	63094-47
3.00	2.75 / 3.00	Wave roller / 600 mm	^{1*}	20	22	90 +	1,850	63094-83
3.00	2.75 / 3.00	U-Profile Roller / 600 mm	^{1*}	20	22	100 +	-	63094-84
3.00	2.75 / 3.00	V-Profile Roller / 600 mm	^{1*}	20	22	100 +	2,120	63094-86
3.00	2.75 / 3.00	V-Profile Roller / 700 mm	^{1*}	20	22	100 +	-	63094-85
3.00	2.75 / 3.00	Twin U-Profile 600-600 mm	^{1*}	20	22	100 +	-	63094-88
3.00	2.75 / 3.00	Twin V-Profile 600-600 mm	^{1*}	20	22	100 +	-	63094-87
3.50	3.25 / 3.50	Square Tube Roller / 550 mm	^{1*}	-	26	100 +	1,710	63095-47
3.50	3.25 / 3.50	Wave roller / 600 mm	^{1*}	23	26	100 +	2,165	63095-83
3.50	3.25 / 3.50	U-Profile Roller / 600 mm	^{1*}	23	26	110 +	-	63095-84
3.50	3.25 / 3.50	V-Profile Roller / 600 mm	^{1*}	23	26	110 +	2,435	63095-86
3.50	3.25 / 3.50	V-Profile Roller / 700 mm	^{1*}	23	26	110 +	-	63095-85
3.50	3.25 / 3.50	Twin U-Profile 600-600 mm	^{1*}	23	26	110 +	-	63095-88
3.50	3.25 / 3.50	Twin V-Profile 600-600 mm	^{1*}	23	26	110 +	-	63095-87
4.00	3.75 / 4.00	Square Tube Roller / 550 mm	^{1*}	-	30	110 +	1,920	63096-47
4.00	3.75 / 4.00	Wave roller / 600 mm	^{1*}	26	30	110 +	2,480	63096-83
4.00	3.75 / 4.00	U-Profile Roller / 600 mm	^{1*}	26	30	120 +	-	63096-84
4.00	3.75 / 4.00	V-Profile Roller / 600 mm	^{1*}	26	30	120 +	2,750	63096-86
4.00	3.75 / 4.00	V-Profile Roller / 700 mm	^{1*}	26	30	120 +	-	63096-85
4.00	3.75 / 4.00	Twin U-Profile 600-600 mm	^{1*}	26	30	120 +	-	63096-88
4.00	3.75 / 4.00	Twin V-Profile 600-600 mm	^{1*}	26	30	120 +	-	63096-87
2-SECTION MODELS WITH HYDRAULIC FOLDING								
4.50	4.25 / 2.32	Square Tube Roller / 550 mm	^{2*}	-	34	130 +	-	63097-47
4.50	4.25 / 2.32	Wave roller / 600 mm	^{2*}	30	34	140 +	-	63097-83
4.50	4.25 / 2.32	U-Profile Roller / 600 mm	^{2*}	30	34	140 +	-	63097-84
4.50	4.25 / 2.32	V-Profile Roller / 600 mm	^{2*}	30	34	140 +	-	63097-86
4.50	4.25 / 2.32	V-Profile Roller / 700 mm	^{2*}	30	34	140 +	-	63097-85
5.50	5.25 / 2.32	Square Tube Roller / 550 mm	^{2*}	-	42	160 +	-	63098-47
5.50	5.25 / 2.32	Wave roller / 600 mm	^{2*}	36	42	170 +	-	63098-83
5.50	5.25 / 2.32	U-Profile Roller / 600 mm	^{2*}	36	42	170 +	-	63098-84
5.50	5.25 / 2.32	V-Profile Roller / 600 mm	^{2*}	36	42	170 +	-	63098-86
5.50	5.25 / 2.32	V-Profile Roller / 700 mm	^{2*}	36	42	170 +	-	63098-85
6.50	6.25 / 2.32	Square Tube Roller / 550 mm	^{2*}	-	50	190 +	4,010	63099-47
6.50	6.25 / 2.32	Wave roller / 600 mm	^{2*}	42	50	200 +	-	63099-83
6.50	6.25 / 2.32	U-Profile Roller / 600 mm	^{2*}	42	50	200 +	-	63099-84
6.50	6.25 / 2.32	V-Profile Roller / 600 mm	^{2*}	42	50	200 +	-	63099-86
6.50	6.25 / 2.32	V-Profile Roller / 700 mm	^{2*}	42	50	200 +	-	63099-85

^{1*}Requires 1 double-acting oil outlet.

^{2*}Requires 2 double-acting oil outlets.

STANDARD EQUIPMENT

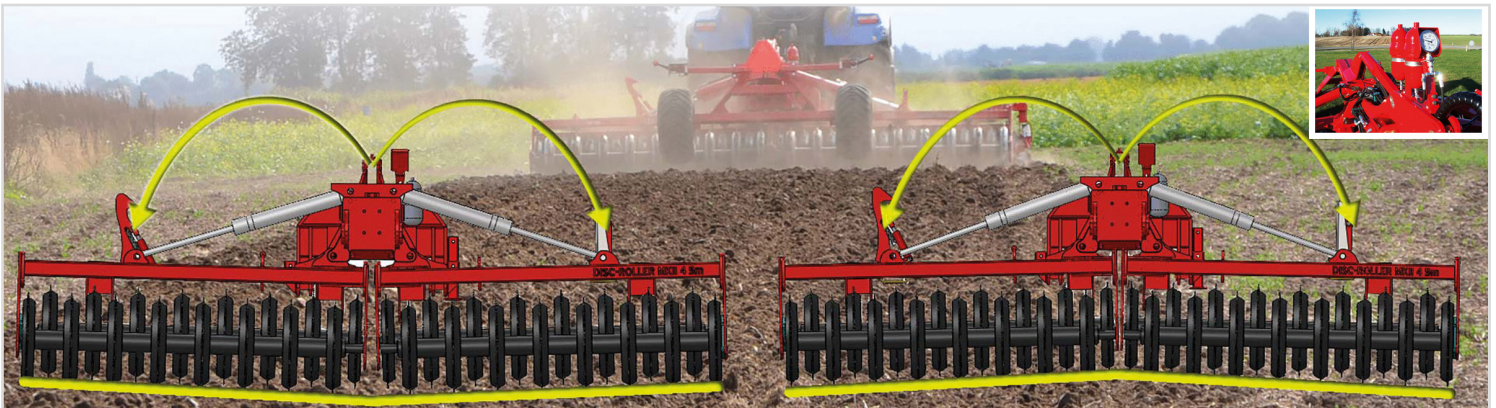
- HE-VA SAT-System on models with 2- and 3-sections: hydr. adjustable weight transfer system, ensuring equal weight transfer in the total working width.
- Hydr. adjustment of the working depth, at the same time used for lifting of "disc" on headland.
- Adjustable drawbar height with distance clips and parking device for hydraulic hoses.
- Adjustable edge disc for retain soil on right side.
- Scraper between the rings, only on Single V and U-Profile Roller as well as Wave roller.
- 60 mm axles, fitted with 60 mm triple-sealed ball bearings on all models.



Standard equipment on all models:
Adjustable edge disc for retain soil on right side.



Standard equipment on all models:
"DSD": Depth Synchronized Disc-Aggressiveness.



Standard equipment on models with 2 and 3 section: HE-VA SAT-System:
Hydr. adjustable weight transfer system, ensuring equal weight transfer in the total working width, resulting in the fact that the wing sections follow the terrain.

DISC-ROLLER CONTOUR (TRAILED)



5.50 m Disc-Roller Contour with Twin V-Profile Roller and material damper guard.



8.00 m Disc-Roller Contour with V-Profile Roller and support wheels.

- HE-VA SAT-System on models with 2 and 3 sections.
- Sabre disc[®] 510 x 4 mm large scalloped disc with specially designed coulter profile – thus ensuring an improved cutting of surface stubble preparation.
- Maintenance-free disc-hubs.
- Working depth of up to 125 mm in minimal tillage cultivations.
- "DSD - Technology": Depth Synchronized Disc-Aggressiveness.

MACHINES

Model, m	Work / Transport Width, m	Roller Type	No. of Rings	No. of Discs	Power Req., HP	Weight, kg	Item Number
1-SECTION RIGID MODELS WITHOUT HYDRAULIC FOLDING							
2.50	2.25 / 2.50	Wave roller / 600 mm	^{1*} 16	18	80 +	-	63093-61
2.50	2.25 / 2.50	U-Profile Roller / 600 mm	^{1*} 16	18	90 +	-	63093-68
2.50	2.25 / 2.50	V-Profile Roller / 600 mm	^{1*} 16	18	90 +	-	63093-63
2.50	2.25 / 2.50	V-Profile Roller / 700 mm	^{1*} 16	18	90 +	-	63093-69
2.50	2.25 / 2.50	Twin U-Profile 600-600 mm	^{1*} 16	18	90 +	-	63093-67
2.50	2.25 / 2.50	Twin V-Profile 600-600 mm	^{1*} 16	18	90 +	-	63093-66
3.00	2.75 / 3.00	Wave roller / 600 mm	^{1*} 20	22	100 +	2,400	63091-61
3.00	2.75 / 3.00	U-Profile Roller / 600 mm	^{1*} 20	22	100 +	-	63091-68
3.00	2.75 / 3.00	V-Profile Roller / 600 mm	^{1*} 20	22	100 +	3,040	63091-63
3.00	2.75 / 3.00	V-Profile Roller / 700 mm	^{1*} 20	22	100 +	-	63091-69
3.00	2.75 / 3.00	Twin U-Profile 600-600 mm	^{1*} 20	22	100 +	-	63091-67
3.00	2.75 / 3.00	Twin V-Profile 600-600 mm	^{1*} 20	22	100 +	-	63091-66
3.50	3.25 / 3.50	Wave roller / 600 mm	^{1*} 23	26	100 +	2,710	63096-61
3.50	3.25 / 3.50	U-Profile Roller / 600 mm	^{1*} 23	26	110 +	-	63096-68
3.50	3.25 / 3.50	V-Profile Roller / 600 mm	^{1*} 23	26	110 +	3,160	63096-63
3.50	3.25 / 3.50	V-Profile Roller / 700 mm	^{1*} 23	26	110 +	-	63096-69
3.50	3.25 / 3.50	Twin U-Profile 600-600 mm	^{1*} 23	26	110 +	-	63096-67
3.50	3.25 / 3.50	Twin V-Profile 600-600 mm	^{1*} 23	26	110 +	-	63096-66
4.00	3.75 / 4.00	Wave roller / 600 mm	^{1*} 26	30	110 +	3,030	63092-61
4.00	3.75 / 4.00	U-Profile Roller / 600 mm	^{1*} 26	30	120 +	-	63092-68
4.00	3.75 / 4.00	V-Profile Roller / 600 mm	^{1*} 26	30	120 +	3,300	63092-63
4.00	3.75 / 4.00	V-Profile Roller / 700 mm	^{1*} 26	30	120 +	-	63092-69
4.00	3.75 / 4.00	Twin U-Profile 600-600 mm	^{1*} 26	30	120 +	-	63092-67
4.00	3.75 / 4.00	Twin V-Profile 600-600 mm	^{1*} 26	30	120 +	-	63092-66
2-SECTION MODELS WITH HYDRAULIC FOLDING							
4.50	4.25 / 2.42	Wave roller / 600 mm	^{2*} 30	34	130 +	-	63092-83
4.50	4.25 / 2.42	U-Profile Roller / 600 mm	^{2*} 30	34	140 +	-	63092-84
4.50	4.25 / 2.42	V-Profile Roller / 600 mm	^{2*} 30	34	140 +	-	63092-86
4.50	4.25 / 2.42	V-Profile Roller / 700 mm	^{2*} 30	34	140 +	-	63092-81
4.50	4.25 / 2.42	Twin U-Profile 600-600 mm	^{2*} 30	34	140 +	-	63092-88
4.50	4.25 / 2.42	Twin V-Profile 600-600 mm	^{2*} 30	34	140 +	-	63092-87
5.50	5.25 / 2.42	Wave roller / 600 mm	^{2*} 36	42	160 +	-	63093-83
5.50	5.25 / 2.42	U-Profile Roller / 600 mm	^{2*} 36	42	170 +	-	63093-84
5.50	5.25 / 2.42	V-Profile Roller / 600 mm	^{2*} 36	42	170 +	4,770	63093-86
5.50	5.25 / 2.42	V-Profile Roller / 700 mm	^{2*} 36	42	170 +	-	63093-81
5.50	5.25 / 2.42	Twin U-Profile 600-600 mm	^{2*} 36	42	170 +	-	63093-88
5.50	5.25 / 2.42	Twin V-Profile 600-600 mm	^{2*} 36	42	170 +	-	63093-87
6.50	6.25 / 2.62	Wave roller / 600 mm	^{2*} 42	50	190 +	-	63091-83
6.50	6.25 / 2.62	U-Profile Roller / 600 mm	^{2*} 42	50	200 +	-	63091-84
6.50	6.25 / 2.62	V-Profile Roller / 600 mm	^{2*} 42	50	200 +	-	63091-86
6.50	6.25 / 2.62	V-Profile Roller / 700 mm	^{2*} 42	50	200 +	-	63091-81
6.50	6.25 / 2.62	Twin U-Profile 600-600 mm	^{2*} 42	50	200 +	-	63091-88
6.50	6.25 / 2.62	Twin V-Profile 600-600 mm	^{2*} 42	50	200 +	-	63091-87
3-SECTION MODELS WITH HYDRAULIC FOLDING							
8.00	7.75 / 2.45	Wave roller / 600 mm	^{2*} 53	64	220 +	-	63095-66
8.00	7.75 / 2.45	U-Profile Roller / 600 mm	^{2*} 53	64	240 +	-	63095-68
8.00	7.75 / 2.45	V-Profile Roller / 600 mm	^{2*} 53	64	240 +	-	63095-65

^{1*}Requires 2 double-acting oil outlets.

^{2*}Requires 3 double-acting oil outlets.

STANDARD EQUIPMENT

- HE-VA SAT-System on models with 2- and 3-sections: hydr. adjustable weight transfer system, ensuring equal weight transfer in the total working width.
- Hydr. adjustment of the working depth, at the same time used for lifting of “disc” on headland.
- Adjustable drawbar height with distance clips and parking device for hydraulic hoses.
- Adjustable edge disc for retain soil on right side.
- Scraper between the rings, only on Single V and U-Profile Roller as well as Wave roller.
- 60 mm axles, fitted with 60 mm triple-sealed ball bearings on all models.
- Wheels :
 - 2.50 and 3.00 m 1-section: 11.5/80x 15.3 – 14 PLY.
 - 3.50 and 4.00 m 1-section and 4.50 m 2-section: 400/60 x 15.5 – 16 PLY.
 - 5.50, 6.50 and 8.00 m: 500/50 x 17.0 – 18 PLY.
- Pivotal towing eye, secured by bolts :
 - 2.50 – 4.00 m, item no.. 630757028.
 - 4.50 – 8.00 m, item no.. 630757017.
- Only 8.00 m:
 - Hydr. jack stand with change-over valve from folding function.
 - Electric depth stop with switch in the cabin.
 - Hydr. operation of locking f/middle section in working position.



5.50 m Disc-Roller Contour with Twin V-Profile Roller and material damper guard.



3.50 m Disc-Roller Contour trailed with Twin V-Profile Roller and Spring-Board.



6.50 m Disc-Roller Contour with V-Profile Roller, material damper guard, pivoting support wheels and two-point pivoting crossbar.

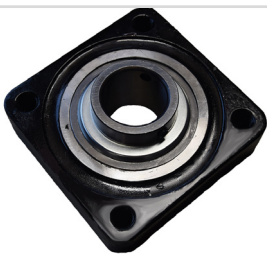


EXTRA EQUIPMENT - THREE-POINT MOUNTED / TRAILED

Description	Weight, kg	Item Number
LED lights with wire and socket, for 1-section three-point mounted models	3	63090-01
LED lights with wire and socket, for 2-section three-point mounted models	3	63097-01
LED lights w/wire and socket, for 1-section trailed models	3	63092-01
LED lights w/wire and socket, for 2-sections trailed models	3	3401951
LED lights w/wire and socket, for 3-sections trailed models	3	63094-01
Set of reflective warning boards (2 pieces)	8	67055-74
In line-system for all 1- and 2-section models. By means of Memory cylinder, the machine's parallelism with the soil surface can be hydraulically adjusted during work.	1*	63091-25
HPV-Controller: El-hydr. operation of 4 functions.	7	3409430

*Requires 1 additional double-acting oil outlet.

Work Width, m	Description	Weight, kg	Item Number
2.50 - 4.50	Electrical depth stop	4	63092-90
5.50 - 6.50	Electrical depth stop	4	63092-89
2.50 - 4.00	Drawbar extension, 300 mm M16 for bolting on	25	63091-95
4.50 - 8.00	Drawbar extension 400 mm M20	31.5	63094-12
3.50 - 4.50	Wheels 500/50x17.0-18 PLY (Additional price per set)	-	3409750
2.50 - 3.00	Trail kit, 11.5/80x15.3	1,075	63090-80
3.50 - 4.50	Trail kit, 400/60x15.5	1,105	63095-80
5.50 - 6.50	Trail kit, 500/50x17.0	1,155	63094-80
3.00 - 6.50	Air brakes	18	63093-96
8.00	Air brakes	18	63094-96
3.00 - 6.50	Hydraulic brakes, 1-circuit	7	63093-94
8.00	Hydraulic brakes, 1-circuit	7	63094-94
3.00 - 6.50	Hydraulic brakes, 2-circuit, factory-mounted	-	63093-95
8.00	Hydraulic brakes, 2-circuit, factory-mounted	-	63094-95
2.50	Material damper guard	50	63090-98
3.00	Material damper guard	60	63091-96
3.50	Material damper guard	70	63096-96
4.00	Material damper guard	80	63092-96
4.50	Material damper guard	105	63092-97
5.50	Material damper guard	120	63093-97
6.50	Material damper guard	125	63091-99
8.00	Material damper guard	160	63095-98
2.50 - 4.00	Rubber sealed/non-lubricant ball bearings, single roller (Additional price per set)	-	63090-03
2.50 - 4.00	Rubber sealed/non-lubricant ball bearings, double roller (Additional price per set)	-	63090-05
4.00 - 6.50	Rubber sealed/non-lubricant ball bearings, single roller (Additional price per set)	-	63090-05
4.00 - 6.50	Rubber sealed/non-lubricant ball bearings, double roller (Additional price per set)	-	63090-08
8.00	Rubber sealed/non-lubricant ball bearings (Additional price per set)	-	63090-06
-	Bearing protector for packing roller (Per unit)	0.9	7355054
-	Ø510 x 5 mm "Sabre discs" HD aggressive (Additional price per m)	-	63090-10
4.50 - 6.50	Wheel track eradicator set with 4 pcs. of 65x12 mm tines for models without Spring-Board	-	63090-38
4.50 - 6.50	Wheel track eradicator set with 4 pcs. of 65x12 mm tines for models with Spring-Board	-	63090-39
-	Extension kit with 4 pcs. of 65x12 mm tines	-	63090-40



Rubber sealed ball bearings.



Bearing protector for packing roller.



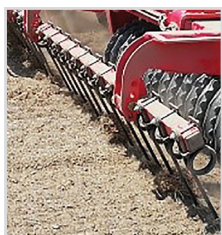
Ø510 x 5 mm "Sabre discs" HD aggressive.



LONGFINGER AFTERHARROW AFTER ROLLER. SPINDLE ADJUSTMENT OF WORKING DEPTH W/POSSIBILITY OF WEIGHT TRANSFER.

Work Width, m	Description	Item Number
2.50	For three-point mounted model	63090-50
3.00	For three-point mounted model	63094-50
3.50	For three-point mounted model	63095-50
4.00	For three-point mounted model	63096-50
4.50	For three-point mounted model	63097-49
5.50	For three-point mounted model	63098-49
6.50	For three-point mounted model	63099-49
2.50	For trailed model - mounted behind transport wheels	63093-51
3.00	For trailed model - mounted behind transport wheels	63091-51
3.50	For trailed model - mounted behind transport wheels	63096-51
4.00	For trailed model - mounted behind transport wheels	63092-51
4.50	For trailed model - mounted behind transport wheels	63092-49
5.50	For trailed model - mounted behind transport wheels	63093-50
6.50	For trailed model - mounted behind transport wheels	63091-49

EXTRA EQUIPMENT - THREE-POINT MOUNTED / TRAILED (CONTINUED)



Work Width, m	Type / Description		Weight, kg	Item Number
SPRING-BOARD (ONLY TRAILED MODELS)				
2.50	Rigid, 1-section	1 ^{1/2} *	240	63390-00
3.00	Rigid, 1-section	1 ^{1/2} *	280	63391-00
3.50	Rigid, 1-section	1 ^{1/2} *	325	63396-00
4.00	Rigid, 1-section	1 ^{1/2} *	370	63392-00
4.50	Foldable, 2-section	1 ^{1/2} *	375	63592-10
5.50	Foldable, 2-section	1 ^{1/2} *	450	63593-10
6.50	Foldable, 2-section	1 ^{1/2} *	525	63594-10
8.00	Foldable, 3-section	1 ^{1/2} *	775	63595-00
-	Edge equipment set for Spring-Board tines		-	63301-00
SPRING-BOARD WITH SLICING PLATES (ONLY TRAILED MODELS)				
2.50	Rigid, 1-section	1 ^{1/2} *	-	63790-00
3.00	Rigid, 1-section	1 ^{1/2} *	-	63791-00
3.50	Rigid, 1-section	1 ^{1/2} *	-	63796-00
4.00	Rigid, 1-section	1 ^{1/2} *	-	63792-00
4.50	Foldable, 2-section	1 ^{1/2} *	-	63592-20
5.50	Foldable, 2-section	1 ^{1/2} *	-	63593-20
6.50	Foldable, 2-section	1 ^{1/2} *	-	63594-20
8.00	Foldable, 3-section	1 ^{1/2} *	-	63895-00
SPRING-BOARD WITH Ø16 MM LONGFINGER TINES (ONLY TRAILED MODELS)				
2.50	Rigid, 1-section - 10 tines	1 ^{1/2} *	174	63390-01
3.00	Rigid, 1-section - 12 tines	1 ^{1/2} *	201	63391-01
3.50	Rigid, 1-section - 14 tines	1 ^{1/2} *	232	63396-01
4.00	Rigid, 1-section - 16 tines	1 ^{1/2} *	264	63392-01
4.50	Foldable, 2-section - 18 tines	1 ^{1/2} *	256	63592-01
5.50	Foldable, 2-section - 22 tines	1 ^{1/2} *	305	63593-01
6.50	Foldable, 2-section - 26 tines	1 ^{1/2} *	354	63594-01
8.00	Foldable, 3-section - 32 tines	1 ^{1/2} *	564	63595-01
TRANSVERSE LOCKING SYSTEM - CONNECTS THE SPRING-BOARD TINES (ONLY TRAILED MODELS)				
2.50	Rigid, 1-section	1*	-	63490-00
3.00	Rigid, 1-section	1*	-	63491-00
3.50	Rigid, 1-section	1*	-	63496-00
4.00	Rigid, 1-section	1*	-	63492-00
4.50	Foldable, 2-section	1*	-	63592-30
5.50	Foldable, 2-section	1*	-	63593-30
6.50	Foldable, 2-section	1*	-	63594-30
8.00	Foldable, 3-section	1*	-	63695-00

¹Requires 1 additional double-acting oil outlet.

²Drawbar extension is recommended, when the tractor is equipped with twin wheels.

SET OF PIVOTING SUPPORT WHEELS, MOUNTED IN FRONT, HEIGHT ADJUSTABLE WHEELS: 2 X 300/55X12- 8 PLY

Work Width, m	Description	Weight, kg	Item Number
2.50 - 6.50	For traileed models.	140	63091-30
2.50 - 6.50	For traileed models with Spring-Board	180	63091-35
8.00	Incl. cross-drawbar for mounting in the tractor's lift arms (630757034). Cannot be combined with Spring-Board.	400	63095-08

Work Width, m	Type	TOP-CUTTER (ONLY TRAILED MODELS)	SPRING-BOARD ON TOP-CUTTER BRACKETS (ONLY TRAILED MODELS)
		Item Number	Item Number
2,50	Rigid	67410-41	67410-42
3,00	Rigid	67410-43	67410-44
3,50	Rigid	67410-45	67410-46
4,00	Rigid	67410-47	67410-48
4,50	Foldable	67410-49	67410-50
5,50	Foldable	67410-51	67410-52
6,50	Foldable	67410-53	67410-54

EXTRA EQUIPMENT - THREE-POINT MOUNTED / TRAILED (CONTINUED)

MOUNTING SET FOR MULTI-SEEDER INCL. STEPS, INCL. MOUNTING ON DISC-ROLLER CONTOUR MAX. 300 KG LOAD IN FINE SEED HOPPER. PRICES AND INFO ON MULTI-SEEDER

Work Width, m	Type		Item Number 8 Outlets	Item Number 12 Outlets	Item Number 16 Outlets
2.50	without Auto-Controller / EC	1*	63090-16	-	-
2.50	with Auto-Controller / EC	2*	63090-17	-	-
3.00	without Auto-Controller / EC	1*	63091-17	-	-
3.00	with Auto-Controller / EC	2*	63091-18	-	-
3.50	without Auto-Controller / EC	1*	63096-16	-	-
3.50	with Auto-Controller / EC	2*	63096-17	-	-
4.00	without Auto-Controller / EC	1*	63092-15	-	-
4.00	with Auto-Controller / EC	2*	63092-23	-	-
4.50	without Auto-Controller / EC	1*	63092-17	63092-24	63092-20
4.50	with Auto-Controller / EC	2*	63092-21	63092-25	63092-22
5.50	without Auto-Controller / EC	1*	63093-15	63093-23	63093-20
5.50	with Auto-Controller / EC	2*	63093-21	63093-24	63093-22
6.50	without Auto-Controller / EC	1*	-	63091-23	63091-19
6.50	with Auto-Controller / EC	2*	-	63091-24	63091-22
8.00	without Auto-Controller / EC	1*	-	63095-23	63095-18
8.00	with Auto-Controller / EC	2*	-	63095-24	63095-22
4.50 - 6.50	Platform and ladder for Multi-Seeder		-	-	63099-45

¹On trailed models hydraulic lifting of seed wheel is included, which requires 1 additional double-acting oil outlet.

²On / Off switch on Multi-Seeder with AC is always mounted on wheel frame.

DISTRIBUTOR SET FOR HE-VA FRONT-TANK

Work Width, m	Description	Item Number
2.50 - 8.00	Distributor set with 12 outlets for HE-VA Front-Tank for Disc-Roller Contour	0537701